

GLARING

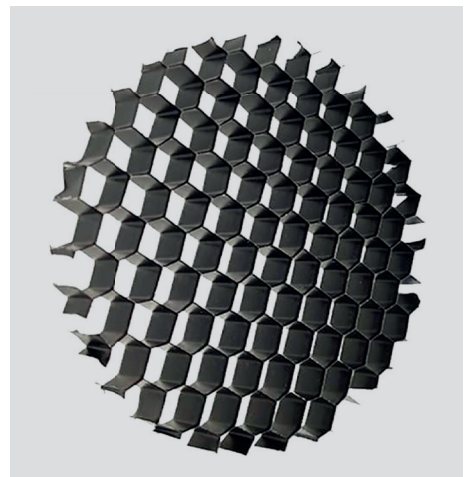
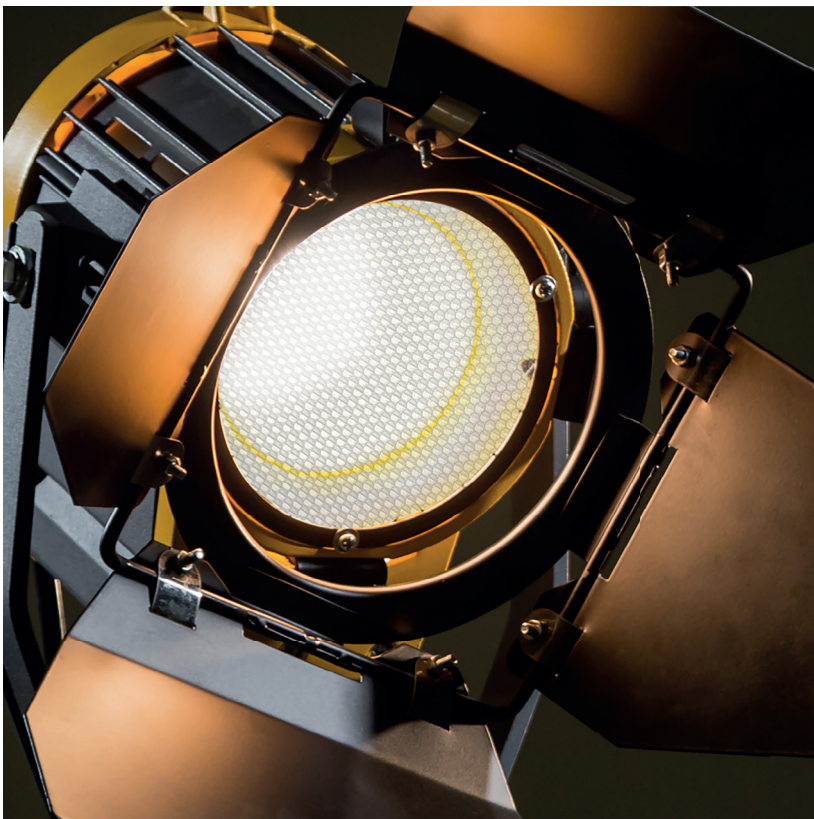
With the term "GLARE" we refer to visual conditions that are not suitable for reducing the brightness of the object due to inadequate distribution of brightness or extreme contrast of brightness in space-time. Glare can be caused by an unshielded light source or a surface with too reflective materials such as a window or glass.

Glare is mainly caused by the angle between the position of the light source and the point of view. A very high intensity light source, with a very high light level or a strong brightness contrast, can cause glare to the viewer.

Glare is a phenomenon that must always be kept under control if you want to create a comfortable lighting system while limiting visual discomfort.

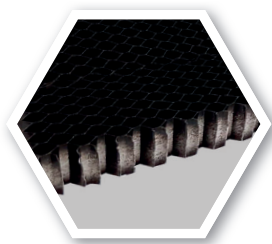
SOLUTIONS TO AVOID GLARING REFLECTIONS

CEL Components produces anti-glare systems for LED lights: aluminium and polycarbonate honeycomb can in fact be used as a grids in front of the reflectors and lamps to enclose the peripheral light avoiding glare reflections.

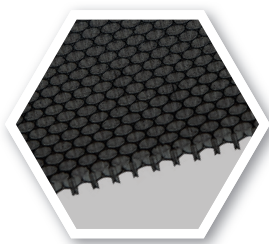


ALUMINIUM AND POLYCARBONATE HONEYCOMB

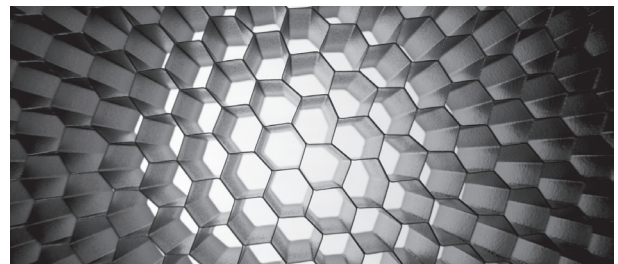
CEL produces each piece on request, therefore customers may determine, colors and shapes. Honeycomb is usually supplied in diameter 3.8 mm or 6. Both are effective for the purpose. Small diameters limit the passage of annoying reflections.



ALUMINIUM

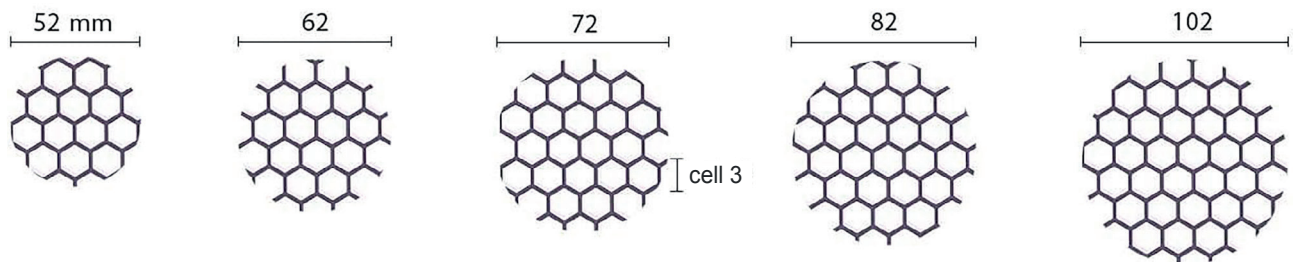


POLYCARBONATE



ROUND CUT

Round cuts with minimum thicknesses in aluminum or black polycarbonate are also available.



COLOURS

A wide variety of colours is available, chosen by the customer. It is also possible to request painting with titanium dioxide, particularly appreciated in closed places, as they help to keep clean the environment.

**Cel Components Srl reserves the right to modify the data shown, without providing any notice.*