

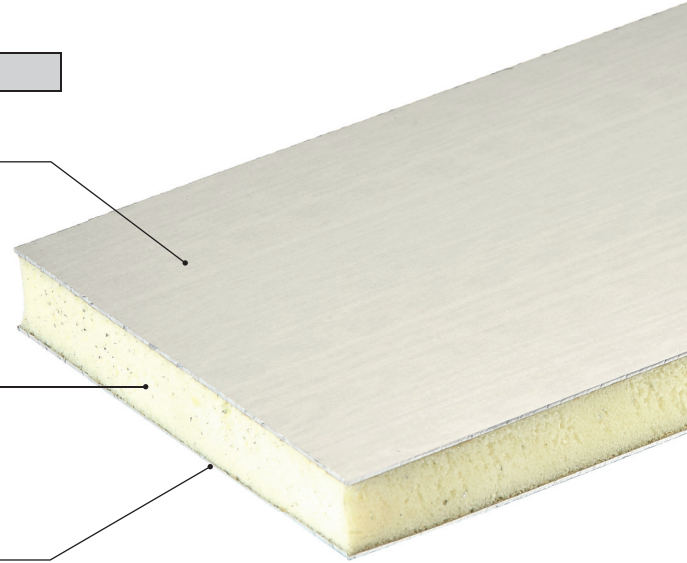
Compocel® Alf

Panel's composition

ALUMINIUM SKINS

Thickness mm: 0,5 - 0,8 - 1 (standard)

CORE Foam



On request: • other thicknesses,
• different types of foam cores and densities (see foams sheet)

Technical data sheet for standard panels (dimensions, materials and special finishes on request)

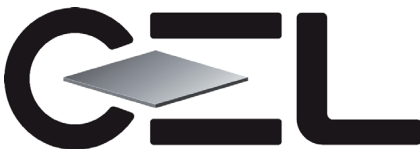
TECHNICAL CHARACTERISTICS OF PANEL		Panel Thickness		from 5 to 100										
		mm		Standard 1250x2500/1500x3000 other dimensions on request										
Panel size		mm	Standard 1250x2500/1500x3000 other dimensions on request											
Thickness tolerance		mm	±0,4											
Dimension tolerance		mm	± 30											
Planarity **		mm / m	1											
Skins thickness		mm	from 0,5 to 5,0											
Skin			1000 series, 3000 series, 5000 series											
Core materials			PET foam/PVC foam											
Foam density		Kg/m³	from 40 to 250											
Adhesive			Two-component polyurethane											
Skin characteristics			Raw/primer/polyester/PVDF											
PANEL PHYSIC AND MECHANIC PERFORMANCES		Type panel (some examples)	Panel Thickness mm	10	15	20	25	30	10	15	20	25	30	
			Skin Thickness mm	1,0 + 1,0					1,0 + 1,0					
		Panel weight		6,8	7,2	7,6	8,0	8,4	7,3	8	8,6	9,3	7,6	
		Core material		PET foam					PET foam					
		Foam density	ISO 845	kg/m³	80					135				
		Compressive stabilised strength	ASTM C 365-C365 M	Mpa	0,9					2,3				
		Shear modulus	ISO 1922	MPa	16					35				
		Maximum load *	ASTM C 393†	N	320±30	460±50	610±60	760±80	900±90	560±60	830±80	1100±100	1370±130	1640±160
		Deflection at maximum load *	ASTM C 393†	mm	6±1	5±1	4±1	4±1	3±1	9±1	6±1	5±1	4±1	4±1
		Skins E Elastic Modulus		Mpa	68'000-70'000									
		Moment of inertia I		mm ⁴ /m	40600	98100	180600	288100	420600	40600	98100	180600	288100	420600
		Average resistance to peeling *	ASTM D1781		>440 N/76 mm - 17 Nmm/mm					>480 N/76 mm - 23 Nmm/mm				
		Maximum service temperature *		°C	- 40 / +80									
Thermal expansion coefficient **		°C ⁻¹	2,3*10 ⁻⁵											

* Tested by Internal Laboratory

** Approximate value

† Sample dimension with 4 support points (L, W) 540x50mm; distance among the lower points 500mm, distance among the upper points 250mm

1/2

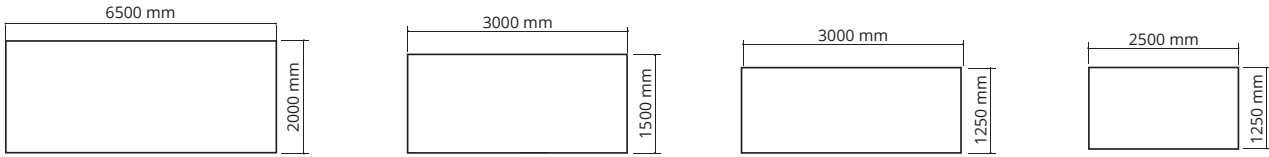


CEL Components S.r.l.
 Via Buozzi 25 - 40057 Cadriano (Bologna) Italy
 Tel. +39 051 782505 Fax +39 051 782477
 www.cel.eu info@cel.eu
 P.IVA 04102600378 CCIAA BO 0339628

ALUMINIUM AND THERMOPLASTIC HONEYCOMBS, LAMINATES, SANDWICH PANELS

ENG

Standard dimensions (other dimensions available on request) - Dimension tolerance ± 30 mm



on request

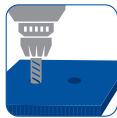
PROCESSING METHODS



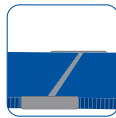
Cutting to size



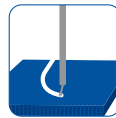
Milling



Drilling



Joining



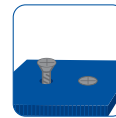
Cut to shape



Panel folding



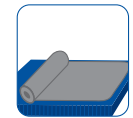
Panel edgings



Inserts



Painting



Veneering

Sandwich Panel Compoce[®] ALF

Last Revised: 02/24_Rev.7